

# C9DP+ Envelope Print Systems

**OKI**<sup>®</sup>



Target new markets and grow your business with color production envelope printing

## C9DP+ Envelope Print Systems:

- C931DP+ CMYK
- C941DP+ CMYK + White or Clear
- C942DP+ CMYK + White and Color-on-Color
- Broaden your services: expand short-run offerings; offer variable data printing in high-definition color
- New design: built “from the ground up” – simplifies job setup, delivers new levels of production reliability
- Incredibly sharp text; rich, saturated press-like colors
- Broadest range of envelope sizes (through Feeder): A2 to 13" x 15"
- Broadest range of media sizes (through Printer): 3" x 5" cards to 52" banners
- Straight-through print path handles envelopes and ultra-heavy card stocks/postcards (up to 360 gsm) with ease
- Optional Fiery<sup>®</sup> C9 Server or Harlequin<sup>®</sup> DirectPrint RIP: process complex jobs fast, expand color management, support VDP formats



Shown:  
C942DP+ Envelope Print System  
(Printer/Feeder/Conveyor/Cabinet).  
Also available: C941DP+ and C931DP+ systems.

# Introducing C9DP+ Envelope Print Systems from OKI®: Next-generation short-run digital production from the leader in envelope printing solutions.

## C9DP+ System Highlights:

### Envelope sizes supported through Feeder

- Standard sizes: A2, A6, A7, A8, A9, A10, Invitation, Com-9, Com-10, Monarch, 6x9, 7x9, 9x12, 10x13, 10x15
- Custom sizes: Widths from 2.5" to 13"; Lengths from 4.5" to 15"; or 2.5" x 4.5" to 13" x 15"

### Printer-supported media

- Straight-through paper path supports envelopes, magnetic media, polyester, transparent film, and heavier stock (up to 360 gsm)
- 3" x 5" cards to 52" banners; Tabloid extra (12" x 18") and Super-B (13" x 19")

### Improved window envelope support

- Raised and angled envelope stack ensures smooth separation of typically challenging media

### Short-run production savings

- C9DP+ Printers' drum life can exceed 100,000 Com-10 envelopes (based on print runs of 50 or more continuous envelopes), dramatically lowering CPP

## Press quality without the mess. Fast digital turnaround. And no setup costs.

Customer requests for short-run envelope production (runs of 5,000 or less) used to be a headache for print shops large and small: not economical for traditional offset printers, too much trouble even for small digital print shops. Until now.

With the C9DP+ Envelope Print Systems from OKI®, a formerly under-served market represents an opportunity to expand your business.

**Press quality that's easy** – Each C9DP+ model enables you to print short runs in less time than it takes to produce printing plates and ink up a press. Print up to 500 Com-10 envelopes in under 12 minutes<sup>1</sup>— with output that rivals traditional offset printing presses.

**Beyond 4-color printing** – The addition of White toner lets you do something very unique. Broaden your printed offerings with stunning white on color stocks offered by both the C941DP+ and C942DP+.

And the C942DP+ intelligently and accurately applies White under CMYK to produce brilliant color on dark media.

Generate additional sources of revenue with the ability to print brilliant white and striking color on color envelopes and stock for breathtakingly unique applications.

**Print for Profit** – OKI's range of C9DP+ models lets you extend your in-house color printing capabilities from the expected to the extraordinary. It's a new breed of print devices, perfect for short runs and, with a duty cycle rated at up to 300,000 pages per month, rugged enough for longer runs.

Add an optional EFI® Fiery® C9 Server or Harlequin® DirectPrint RIP to your system and offer your customers short-run, targeted variable data printing (VDP) with accurate, consistent color.

With their ease of use and low total cost of ownership, these affordable envelope printing systems enable you to produce premium printed products, offer new services, and grow your business and your profits.

## C9DP+ Systems have what you need to grow your business

### What are you looking for to grow your business?

Affordable short runs (under 5,000 pieces) of customized envelopes, with fast turn-around times

Offering unique sizes and colors of envelopes, and print white or color without silkscreening (e.g. invitation envelopes)

Variable data printing (VDP) on envelopes, letters, postcards, etc. for targeted mailing campaigns

Accurate reproduction of company colors/logos and consistent color between items in promotional campaigns

Flexibility for customization, ability to make last minute design changes, with minimal setup

Ability to quickly produce a mock-up/sample envelope or print piece for client sign-off

### Here's what you get with C9DP+ Systems:

Cost-effective means to produce short runs with little overhead or job start-up costs, and full control over timing

Print on color envelopes in a variety of sizes and weights, using white or clear toner, or color on white in one pass

Optional RIP (see above) enables and greatly accelerates VDP processing time, perfect for personalized data/graphics

Accurate color through printer or RIP provides consistent output for all deliverables

Quickly go from design (in-house or client-provided) to production, no setup required

Easy to produce mock-ups using same system that will produce final envelope or print piece



# Results that transcend expectations – through versatility, fast print speed, ease of use, and unique output choices. C9DP+ Systems: the top of the line in LED envelope printing.

## C9DP+ Systems: Color Printing Capabilities at a Glance



### C931DP+ System: Affordability (Low CPP)

- 4-Color Digital Printing (CMYK)



### C941DP+ System: Versatility (5+ Color)

- 5-Color Digital Printing (CMYK + Clear or CMYK + White)



### C942DP+ System: Creativity (5+ Color-on-Color)

- 5-Color Digital Printing (CMYK + White, CMYK over White in 1 pass)

- Straight-through paper path for envelopes and heavy stock
- True 1200 x 1200 dpi resolution
- Robust media support
- 50 ppm on letter-size sheets<sup>1</sup>
- 38,000-page CMYK toners<sup>2</sup>
- High-resolution color LCD display panel with alphanumeric keypad
- 2 GB memory, 1 Gigabit network and 2-sided sheet-fed printing, standard
- PC and Mac® OS Postscript® print drivers with trapping
- Easy front access to toner cartridges and image drums

## Look what else you can produce with a C9DP+ System from OKI:



**Signage and Posters** – Print CMYK over White toner on clear polyester window-cling media for attention-grabbing results.

**Eye-popping Polyester Door Hangers** – White toner gives powerful emphasis to text and graphics, making for a unique application.



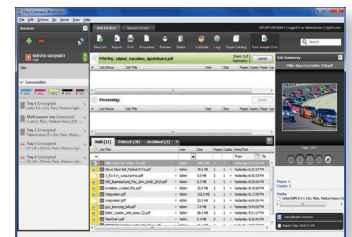
**Envelopes** – Print color on color to produce brilliant full-color images, especially impactful on dark-colored envelope media.

## Optional RIP ensures color accuracy and streamlines color management

Equipped with an optional external RIP, C9DP+ Systems expedite and streamline job processing while maintaining industry-standard color management for consistent, predictable results.

- **The optional Fiery® C9 Server from EFI®** offers fast, precise color reproduction and flexible job management. It uses the most popular Fiery features—including Command WorkStation®, Spot-On™ and Adobe® PDF Print Engine 3.0—to expand the production capabilities and improve the operational efficiencies of print shops and in-house printing services.
- **The optional Harlequin® DirectPrint RIP** is a cost-effective way to take full advantage of the C9DP+ Systems' color-on-color capabilities. It's both fast and easy to use, ensuring beautiful and accurate color every time. The "HDP" uses a PDF workflow, accepting jobs from both Mac and PC. Built-in Harlequin Dispersed Screening (HDS) and Hybrid Screening (HXM) produce sharp details and high-fidelity color transitions.

PANTONE® libraries are included in both the Fiery C9 Server and Harlequin DirectPrint RIP, to ensure accurate color matching job to job. For details on the optional RIPs, please contact your OKI representative.



EFI Fiery C9 Server with Command WorkStation



Harlequin DirectPrint RIP

# C9DP+ Envelope Print Systems

Specifications		
Performance Print Speed <sup>1</sup>	CMYK/Mono	<b>All Models:</b> Up to 500 Com 10 envelopes in under 12 minutes; 50 ppm Letter-size sheets, 27 ppm Tabloid sheets
	CMYK + White	<b>C942DP+/C941DP+:</b> Up to 45 ppm Letter, 24 ppm Tabloid
	CMYK + Clear	<b>C941DP+ only:</b> Up to 17 ppm Letter
Duty Cycle	Printers	300,000 pages max per month
Print Quality	Resolution	Up to 1200 x 1200 dpi; ProQ 1200 x 600 x 16 levels
Memory	RAM (Standard/Max)	2 GB
	Processor	1.2 GHz ARM CPU
Compatibility	Printer Languages	Adobe® PostScript 3™, PCL® 6, PCL 5c, XPS®
	Connectivity	High-speed USB 2.0, 10 Base-T/100 Base-TX/1000 Base-T Ethernet
	Operating Systems	Windows® 8, Windows 7, Windows Vista®, Windows XP, Windows Server 2012, Windows Server 2008, Windows Server 2008 R2, Windows Server 2003; Mac® OS 10.3.9 – 10.9
	Network Protocols	TCP/IP, EtherTalk
Color Features/ Solutions	Standard	OKI PostScript® driver supports trapping; Embedded ICC Profile-based workflow; Simulations for SWOP, ISO Coated, Japan Color; PDF Direct Print; PS Gamma Adjust; and Color Correct
	Optional	External PC-based RIP: Global Graphics® Harlequin® DirectPrint RIP or Fiery® C9 Server with Command WorkStation® from EFI®
Media Handling	Media Sizes	<b>Envelope Feeder:</b> A2, A6, A7, A8, A9, A10, Invitation, Com-9, Com-10, Monarch, 6x9, 7x9, 9x12, 10x13, 10x15; Custom size range: 2.5" x 4.5" to 13" x 15" <b>Paper Trays:</b> Tabloid extra (12" x 18"), Tabloid (11" x 17"), Legal, Letter, Executive, 3" x 5" Index cards
	Media Weight	Trays 1 & 2 and optional High-Capacity Feeder: 52–320gsm; Multi-purpose Tray/Feeder: 80–360gsm
Media Capacity	Multi-purpose Tray/Feeder	Up to 600 Com-10 envelopes
	Trays 1 & 2	Up to 530 sheets each
	High-Capacity Feeder (Optional)	Up to 1,590 sheets (3 trays, 530 sheets each)
Media Output	Face Down	Max 610 sheets
	Face Up	500 envelopes via Stacking Conveyor
Environmental	Size (WxDxH)	<b>Printer:</b> 27.5" x 24.6" x 25.2" (699 mm x 625 mm x 640 mm) <b>Printer/Feeder/Conveyor:</b> 103.5" x 24.6" x 48.6" (2629mm x 625mm x 1234mm)
	Weight	<b>C942DP+/C941DP+ (Printer):</b> 244.4 lb. (110.8 kg) including consumables <b>C931DP+ (Printer):</b> 215.2 lb. (97.6 kg) including consumables <b>Feeder:</b> 86.4 lb. (39.2 kg); <b>Conveyor:</b> 60.6 lb. (27.5 kg)
	Temperature/Humidity	50° – 90°F (10° – 32°C) / 20% – 80%RH
	Power Consumption	<b>Printer:</b> Active 1600W max. /1100W avg.; Standby avg. 40W; PowerSave mode 30W or less; Sleep mode 4W or less; Auto Shutoff 0.4W or less. <b>Feeder/Conveyor:</b> 180W max.
	Noise Levels	<b>Printer:</b> Active 57dBA or less; Standby 34dBA or less; PowerSave mode – Inaudible
	Warranty	Limited

Ordering Information	
Description	Part Number
<b>5-Color Envelope Print Systems</b>	
C942DP+ (120V)	91692904
C941DP+ (120V)	91691304
<b>4-Color Envelope Print System</b>	
C931DP+ (120V)	91690704
<b>C941DP+ Spot Color Kits</b>	
(White or Clear kit must be purchased with C941DP+; required for operation) (C941DP+ spot color kits have clear and white starter toner at 10,000 pages)	
White	45531302
Clear	45531402
<b>C942DP+ White Color Kit</b>	
(Included with purchase of C942DP+ model) (C942DP+ White is a 10,000 page starter toner cartridge)	
<b>Toner Cartridges</b>	
Cyan (38,000 pages <sup>2</sup> )	45536515
Magenta (38,000 pages <sup>2</sup> )	45536514
Yellow	
C941DP+/C931DP+ (38,000 pages <sup>2</sup> )	45536513
C942DP+ (24,000 pages <sup>2</sup> )	45536438
Black (38,000 pages <sup>2</sup> )	45536516
White	
C942DP+ (15,000 pages <sup>4</sup> )	45536542
C941DP+ (10,000 pages <sup>4</sup> )	45536405
Clear (C941DP+ only – 20,000 pages <sup>4</sup> )	45536406
<b>Image Drums</b>	
Cyan (40,000 pages <sup>5</sup> )	45103727
Magenta (40,000 pages <sup>5</sup> )	45103726
Black (40,000 pages <sup>5</sup> )	45103728
White	
C942DP+ (20,000 pages <sup>5</sup> )	45103764
C941DP+ (20,000 pages <sup>5</sup> )	45103729
Clear (C941DP+ only – 20,000 pages <sup>5</sup> )	45103730
<b>Waste Toner Box (Approx. 40,000 pages<sup>5</sup>)</b>	45531502
<b>Fuser (Approx. 150,000 pages<sup>5</sup>)</b>	45531112
<b>Transfer Belt</b>	
Approx. 150,000 pages <sup>5</sup>	45531222
<b>Options</b>	
530-Sheet 2nd Tray	45530702
High-Capacity Feeder w/caster base	45530802
Base Cabinet	70065701
160 GB Hard Disk Drive	44622302
EFI Fiery C9 Server	46299302
Harlequin DirectPrint RIP PC-based Server	70066201

<sup>1</sup> Published performance results based on laboratory testing. Individual results may vary.

<sup>2</sup> Based on ISO/IEC 19798.

<sup>3</sup> On-site 2nd business day service available in the U.S. and Canada only.

<sup>4</sup> Based on 5% coverage of letter-size sheet, simplex.

<sup>5</sup> Estimated life based on 3 pages per job (single sided letter-size, long-edge feed).

Specifications are subject to change without notice.

© 2016 Oki Data Americas, Inc. OKI Reg. T.M., M.D., Oki Electric Industry Co., Ltd. 5+ Color logo T.M., Oki Data Americas, Inc. Adobe Reg. T.M., PostScript 3 T.M., Adobe Systems, Inc. PCL Reg. T.M., Hewlett-Packard Co. Windows, Windows Vista Reg. T.M., Microsoft Corp. XPS Reg. T.M., Dell, Inc. Mac Reg T.M., Apple Inc. Harlequin Reg. T.M., MultiRIP, DirectPrint, T.M., Global Graphics Software Ltd. EFI Reg. T.M., Electronics for Imaging, Inc.

Printed in the USA



MS16187-1116

## OKI DATA AMERICAS, INC.

**USA**  
2000 BISHOPS GATE BLVD.  
MOUNT LAUREL, NJ 08054-4620  
TEL: 800.OKI.DATA (800.654.3282)  
FAX: 856.222.5320

[WWW.OKIDATA.COM](http://WWW.OKIDATA.COM)

**CANADA**  
4140B SLADEVIEW CRESCENT  
UNITS 7 & 8  
MISSISSAUGA, ONTARIO L5L 6A1  
TEL: 905.608.5000  
FAX: 905.608.5040

# OKI®

Open up your dreams